



# AWP™ 4835 P

Designed for Asahi Water-washable Plate (AWP)

The AWP™ 4835 P plate processor is designed for the challenging demand of the middle size customer using a plate format of 90 x 120 cm / 35 x 48 inch. The processor is engineered to deliver a sustainable quality output with a fast plate access time. At the

same time the AWP™ 4835 P water processor is reducing the natural water resources to a minimum, making it an environmentally sound solution aiming to drive print forward in balance with the environment.



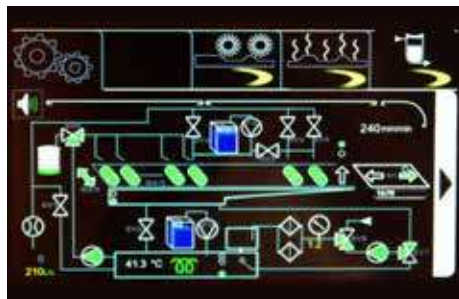
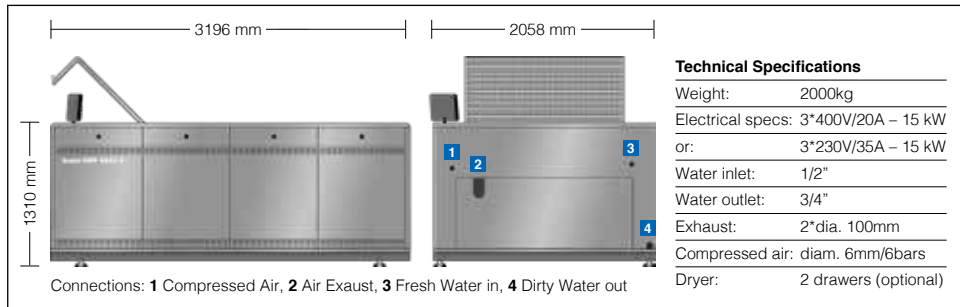
WATCH THE VIDEO

## The AWP™-4835P Main Features

- User-friendly machine dimensions saves space 3196 mm x 2058 mm x 1310 mm (LxWxH)
- Maximum plate size 90 x 120 cm / 35 x 48 inch and plate thickness of 1.14 mm and 1.70 mm
- Washed photopolymer residues are caught in an integrated two-way filtration system and a solid polymer cake remains
- Stainless steel body for easy cleaning
- Maintenance alarms with user's parameter capabilities. All important functions are centrally accessible via Touchscreen
- Remote connection via Internet as standard for machine service
- Automatic clamping bar for easy plate processing
- Reverse rotating oscillating brushes and reciprocating plate setter ensure optimum washout performance
- The processor is compatible with the challenging new screening technologies in the industry
- Processing temperatures at around 40°C ensure perfect plate production with excellent dimensional plate stability
- The AWP™ 4835 satisfies to the highest quality demand using environmentally sound plate processing technologies
- A dryer with 2 drawers is available on request (optional)

# Contact Asahi Photoproducts today to learn more.

|                     |                                  |
|---------------------|----------------------------------|
| Unit                | Processor                        |
| Maximum plate size  | 90 x 120 cm (35 x 48 inch)       |
| Plate type          | DEW, CleanFlat                   |
| Plate thickness     | 1,14 mm ~ 1,70 mm                |
| Dimension of system | L: 3196 mm W: 2058 mm H: 1310 mm |



All important functions are centrally accessible via TouchScreen



Washed photopolymer residues are caught in the filter and a solid polymer cake remains



Internet connection for remote maintenance service



Two-way-filtration system for maximum efficiency

## Optional Unit

If not already available in your platemaking infrastructure, you might need an exposure frame, dryer and light finisher for AWP™ plate processing. There is also an option to include 2 dryer drawers inside the processor.



### Asahi Photoproducts

Paepsem Business Park  
Boulevard Paepsem 22  
B-1070 Brussels, Belgium  
Phone: +32 (0)2 526 05 30  
info@asahi-photoproducts.com

### Asahi Kasei Corporation

Photoproducts Division  
1-1-2, Yurakucho, Chiyoda-ku,  
Tokyo 100-0006, Japan  
Phone: +81(3)6699-3353  
info@asahi-photoproducts.com

### Asahi Kasei Electronics Materials (Suzhou), Co. Ltd

Asahi Flexo Technical Center  
261 Xinglong Street,  
Suzhou Industrial Park  
Jiangsu, 215021 China  
Phone: +86-512-62836188-162  
info@asahi-photoproducts.com