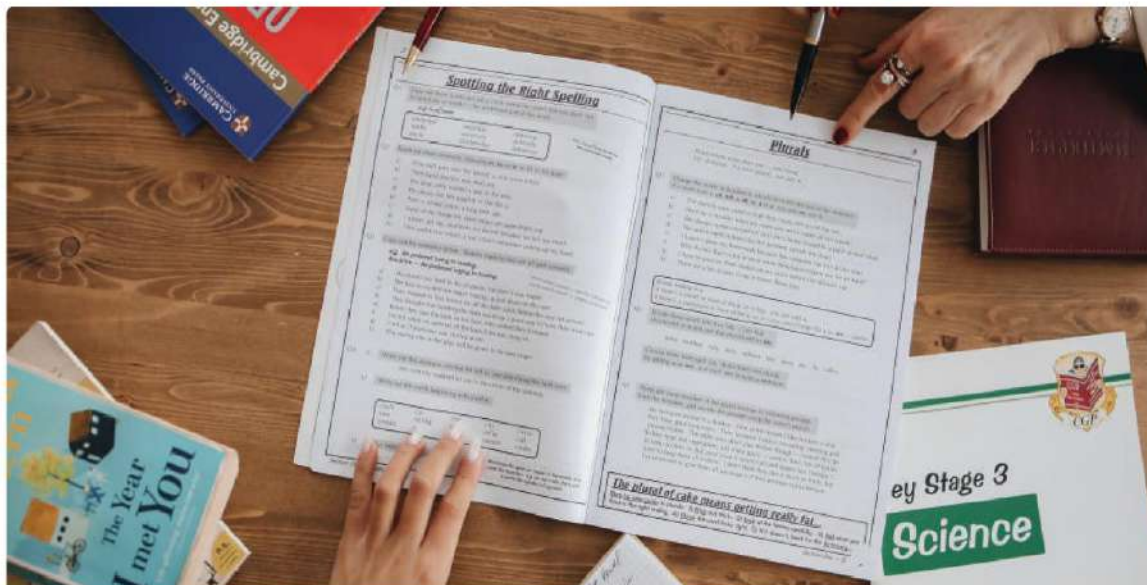


# Kirin660X Comprehensive Solution for Book and Magazine Digital Inkjet Printing Showcases the Following



## Key Highlights

### Unleashes the Cost Benefits with Kirin660X

- Provides flexibility for short-run production, eliminating the need for plate-making and enabling on-demand printing. It is highly adaptable, catering to both large-scale production and small-batch customization needs.
- Reducing the reliance on skilled technicians, the Kirin660X solution reduces overall production, time, and personnel costs, achieving low or even zero inventory levels.
- Experience the stunning image quality and rapid development of new business opportunities with the Kirin660X, enabling effortless expansion of cost-effective on-demand printing for books and magazines with short turnaround times.

### Remarkable Leap in Quality, Efficiency, and Stability with the Powerful Kirin660x

- Next-gen 1200 DPI inkjet printing technology, reaching speeds up to 150 m/min for unparalleled quality and efficiency.
- Achieve industry-leading print quality with a maximum resolution of 1200 \* 1200 DPI, comparable to offset printing, meeting the national standards for book and magazine printing quality.
- Experience the unrivaled power of our cutting-edge solution, featuring a high-resolution industrial print-head, integrated inkjet control system, and advanced tension control. With top-tier components and exceptional hardware and software capabilities, our solution ensures seamless and stable production for long-term success.

### Strong Self-development Capabilities

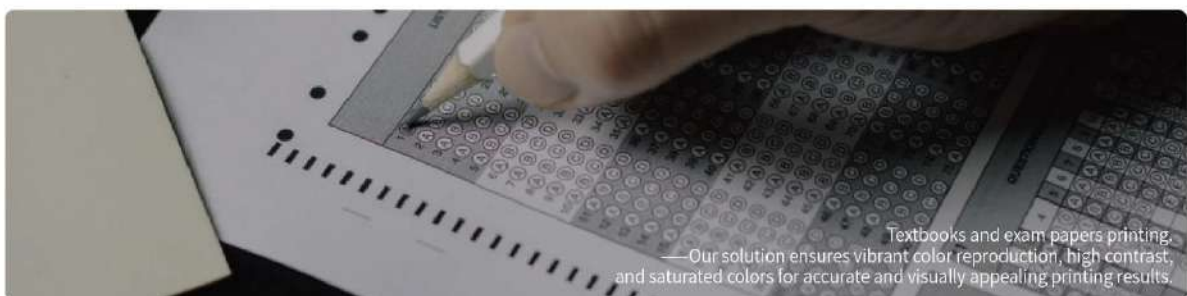
- Complete ownership of the digital inkjet printing technology with independent intellectual property rights. Own control software, mechanical platform, inkjet system, and other core hardware and software components.
- Collaborating with leading printhead manufacturers and leveraging over a decade of experience in high-speed industrial-grade printhead research and utilization, we have mastered the core printhead driving technology, enabling exceptional inkjet performance.
- Self-developed quick-drying CMYK inks deliver fast drying speed, enhanced image resolution, sharper text, and wider paper compatibility. They not only meet strict environmental standards but also produce vibrant colors that closely rival the color gamut of offset printing inks. With our independent ink supply chain, we are committed to fostering a flourishing ecosystem for the inkjet industry.

### Comprehensive Solution Capability

Provide end-to-end comprehensive solutions covering pre-press preparation, printing, cutting, ink supply, and more, ensuring a seamless workflow from start to finish.

- Standard: Roll to Roll / Optional: Roll to Stack
- Wide Range of Materials:  
Wide range of paper types, including coated paper, digital paper, newsprint, lightweight paper, and uncoated paper, without the need for additional coating. It supports a paper weight range of 40 to 157g, ensuring versatility and flexibility in print applications.
- Catering to Customers:  
Publishing houses, printing factories, pre-press companies, graphic production and processing centers, and large to medium-sized graphic and printing shops.

- The solution is suitable for various printing scenarios, including



**Provide comprehensive end-to-end solutions that cover the entire printing process.**

- Printing Width: 350 - 584 mm
- Maximum Printing Speed: 150 m/min
- Color Configuration: Front and Reverse (Monochrome, 2 Colors, 4 Colors (CMYK))
- Printhead Configuration: 1200 DPI
- Inks: Water-based CMYK

## Technical Parameters

### Print Functions

Model	Kirin660X
Printing Method	Single Pass, Piezoelectric Inkjet
Color Capability	CMYK
Ink Type	Waterbase
Color Modules	Front and Reverse (Monochrome, 2 Colors, 4 Colors (CMYK))
Max. Resolution	1200 * 1200 DPI
Max. Printing Speed	150 m/min
Media Types	Coated Paper, Digital Paper, Matte Paper, Newsprint, Lightweight Paper, and Uncoated Paper
Transportation Method	Roll to Roll, Roll to stacks (optional)
Media Thickness	40 - 157 gsm (some papers require testing)
Printing Width	350 - 584 mm
Max. Material Width	660 mm
Max. Material Diameter	1270 mm

### Power Requirements

Power Supply	AC380 V / 50 Hz
Power Consumption	Printer: 35 kW, Dryer: 50 kW
Drying Method	Infrared Air Drying
Printer Dimensions	11150 * 2050 * 2060 mm (roll to sheet)      8150 * 2050 * 2060 mm (roll to roll)

### Working Environment

Temperature	18 - 24 °C
Constant Humidity	40 - 60%



#### Shenzhen HanGlobal Digital Solutions Co., Ltd.

**Add:** No.39 Qingfeng Road, Baolong Street, Longgang District, Shenzhen  
(2-3/F, Building C, Jingmida Digital Culture Industry Park - HanGlory Group)

**Tel:** +86 0755-23080896      **E-mail:** info@hanglorygroup.com

**Fax:** +86 0755-23217841      **Web:** www.hanglorygroup.com/en

©The above information is for reference only, Shenzhen HanGlobal Digital Solutions Co., Ltd. reserves the right of final interpretation, subject to change without notice, the final information subject to contract.

V1.0/2023







